

# 20" FOUR-LAMP T5 HO LIGHT FIXTURE

## DESCRIPTION

- T5 HO (HIGH OUTPUT) LIGHT FIXTURE WITH 420/460 NM, 10,000K, AND PURPLE LAMPS AND LUNAR LED LIGHTS.

## UPC#

- 810957010133

## APPEARANCE

- BLACK ANODIZED FINISH
- ACRYLIC LENS COVER
- BLUE TIMER DISPLAY
- BLACK LEGS

## ELECTRICAL & OPERATING REQUIREMENTS

- RATED VOLTAGE: 120 VOLT AC
- RATED CYCLE: 60 HZ
- POWER FACTOR: 0.57
- INPUT CURRENT: 1.08 AMP
- TOTAL WATTAGE: 74W
- TC: MAX 167° F
- POWER CORD LENGTH: 2 METER

## REFLECTORS

- GERMAN
- 95% REFLECTOR
- PARABOLIC SHAPE

## SIZE & WEIGHT

- **PACKAGING**
  - 21.75 X 12.5 X 6.5 IN
  - 55.245 X 31.75 X 16.51 CM
  - 11.7 LBS / 5.31 KG
- **PRODUCT (LIGHT WITHOUT FRAME MOUNTS)**
  - 19.5 X 10.25 X 3.25 IN
  - 49.53 X 26.035 X 8.255 CM
  - 8.55 LBS / 3.88 KG
- **PRODUCT (LIGHT WITH FRAME MOUNTS)**
  - 21.75 X 10.5 X 5.375 IN
  - 55.245 X 26.67 X 13.653 CM
  - 8.7 LBS / 3.95 KG

## PACKAGING

- **BOX**
  - REINFORCED BROWN CARDBOARD

## OPTIONAL ACCESSORIES

- SUSPENSION HARDWARE
- FIXTURE HANGERS

## WARRANTY & PRODUCT REGISTRATION

- 12 MONTH LIMITED WARRANTY
- PRODUCT REGISTRATION AT **WWW.AQUATICLIFE.COM ONLY**
- LIFETIME REPAIR GUARANTEE (INCLUDED)



Four-Lamp T5 HO Fixture



T5 HO & CF Suspension Hardware  
(Optional)



T5 HO Aquarium Frame Mounts  
(Included)

## FEATURES

- TIMER CONTROLS T5 HO FLUORESCENT LAMPS AND LUNAR LED'S INDEPENDENTLY
- ADJUSTABLE WIDTH AQUARIUM FRAME MOUNTS SUPPORT FIXTURE ABOVE THE AQUARIUM
- GERMAN-MADE SPECIALLY ANGLED REFLECTORS MAXIMIZE LIGHT BY DIRECTING IT INTO THE AQUARIUM
- SUSPENSION PORTS ALLOW CONNECTION TO OPTIONAL CABLES FOR VARIOUS MOUNTING CONFIGURATIONS

## CONTENTS

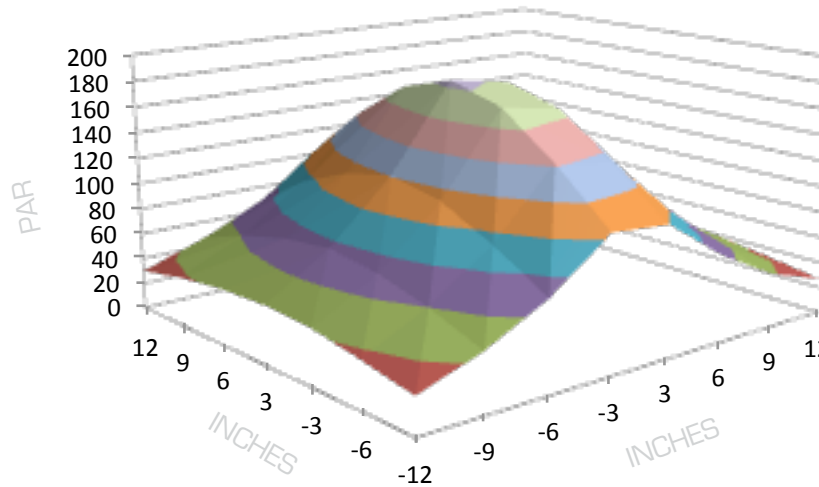
- (1) 20 IN T5 HO LIGHT FIXTURE
- (2) 18 IN T5 HO 18W 420/460 LAMPS
- (1) 18 IN T5 HO 18W 10,000K LAMP
- (1) 18 IN T5 HO 18W PURPLE LAMP
- (2) 1W LUNAR LEDS
- (4) AQUARIUM FRAME MOUNTS
- INSTALLATION & MAINTENANCE GUIDE DISC

PAR Map (Photosynthetically Active Radiation)

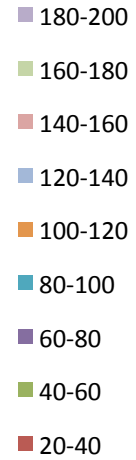
MEASURED AT 12 INCH DEPTH

SIDE VIEW

X AXIS: 50°  
Y AXIS: 15°

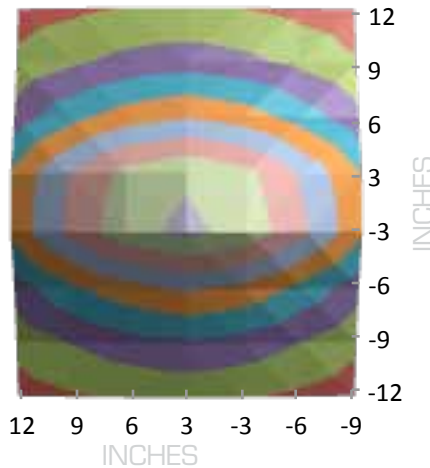


PAR

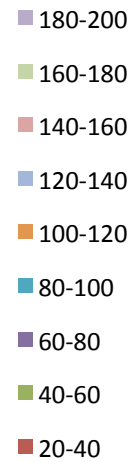


TOP VIEW

X AXIS: 0°  
Y AXIS: 90°



PAR



LAB TEST CRITERIA/DATA TABLE

- 3" X 3" GRID WITH SPACING OF 3" IN THE X,Y DIRECTION
- FIXTURES CENTERED OVER THE GRID AND TESTED THROUGH AIR
- PAR MEASURED AS PPFD (MICROMOLES/M2/SEC) USING APOGEE QUANTUM METER MQ-200

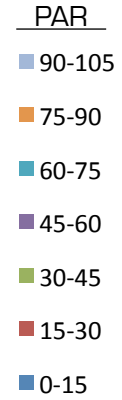
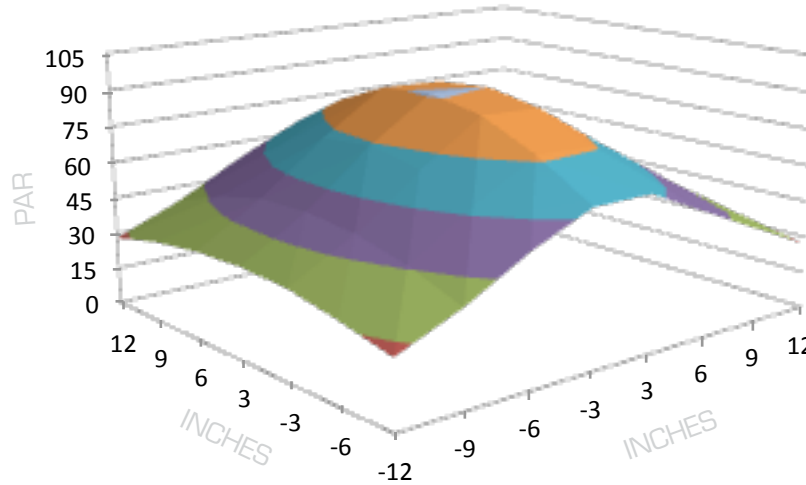
	12	9	6	3	-3	-6	-9
-12	30	38	43	45	43	36	28
-9	47	61	71	76	71	60	45
-6	70	95	112	121	113	93	69
-3	106	143	172	185	173	142	104
3	103	139	166	177	165	135	100
6	69	93	109	117	109	90	67
9	45	57	66	70	65	55	42
12	30	36	41	42	40	34	27

PAR Map (Photosynthetically Active Radiation)

MEASURED AT 18 INCH DEPTH

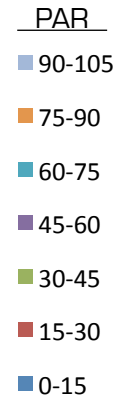
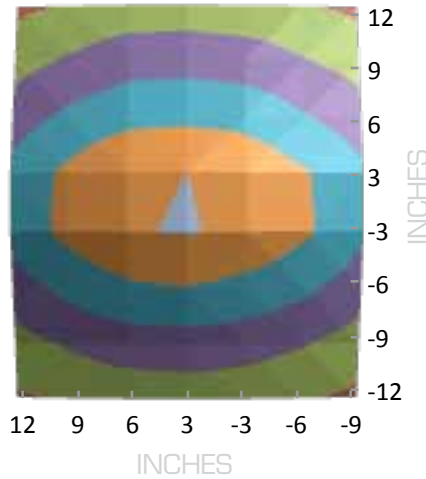
SIDE VIEW

X AXIS: 50°  
Y AXIS: 15°



TOP VIEW

X AXIS: 0°  
Y AXIS: 90°



LAB TEST CRITERIA/DATA TABLE

- 3" X 3" GRID WITH SPACING OF 3" IN THE X,Y DIRECTION
- FIXTURES CENTERED OVER THE GRID AND TESTED THROUGH AIR
- PAR MEASURED AS PPFD (MICROMOLES/M2/SEC) USING APOGEE QUANTUM METER MQ-200

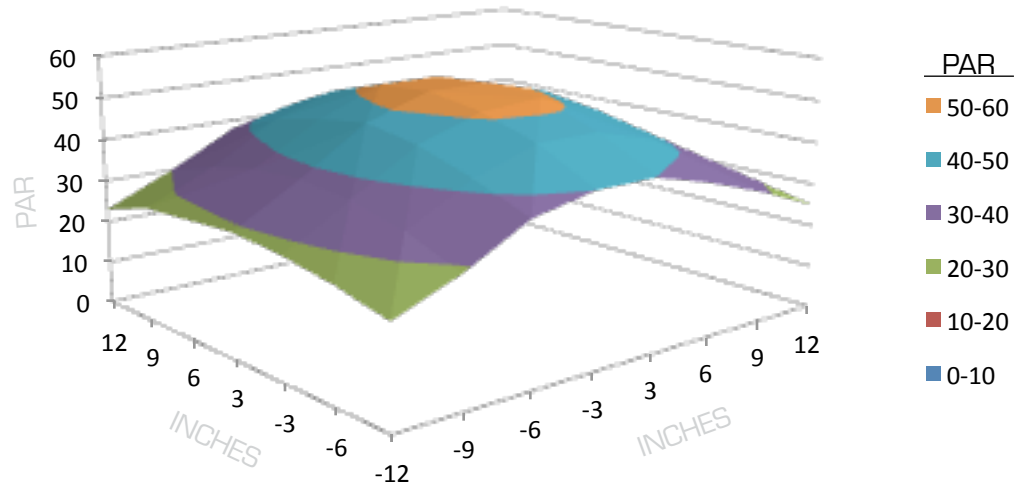
	12	9	6	3	-3	-6	-9
-12	28	33	36	37	36	32	27
-9	39	47	52	53	51	46	38
-6	53	64	72	74	70	63	52
-3	65	79	89	91	87	77	63
3	65	78	88	90	86	76	63
6	52	63	70	71	69	61	51
9	39	47	53	54	52	46	39
12	27	32	36	37	35	32	27

PAR Map (Photosynthetically Active Radiation)

MEASURED AT 24 INCH DEPTH

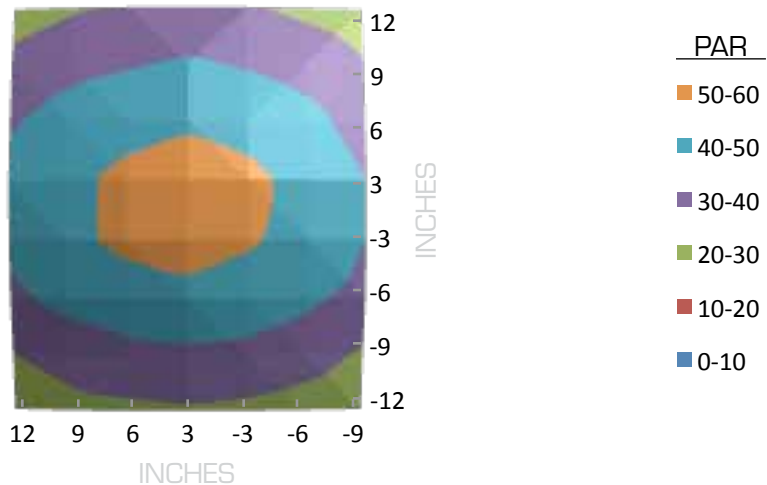
SIDE VIEW

X AXIS: 50°  
Y AXIS: 15°



TOP VIEW

X AXIS: 0°  
Y AXIS: 90°

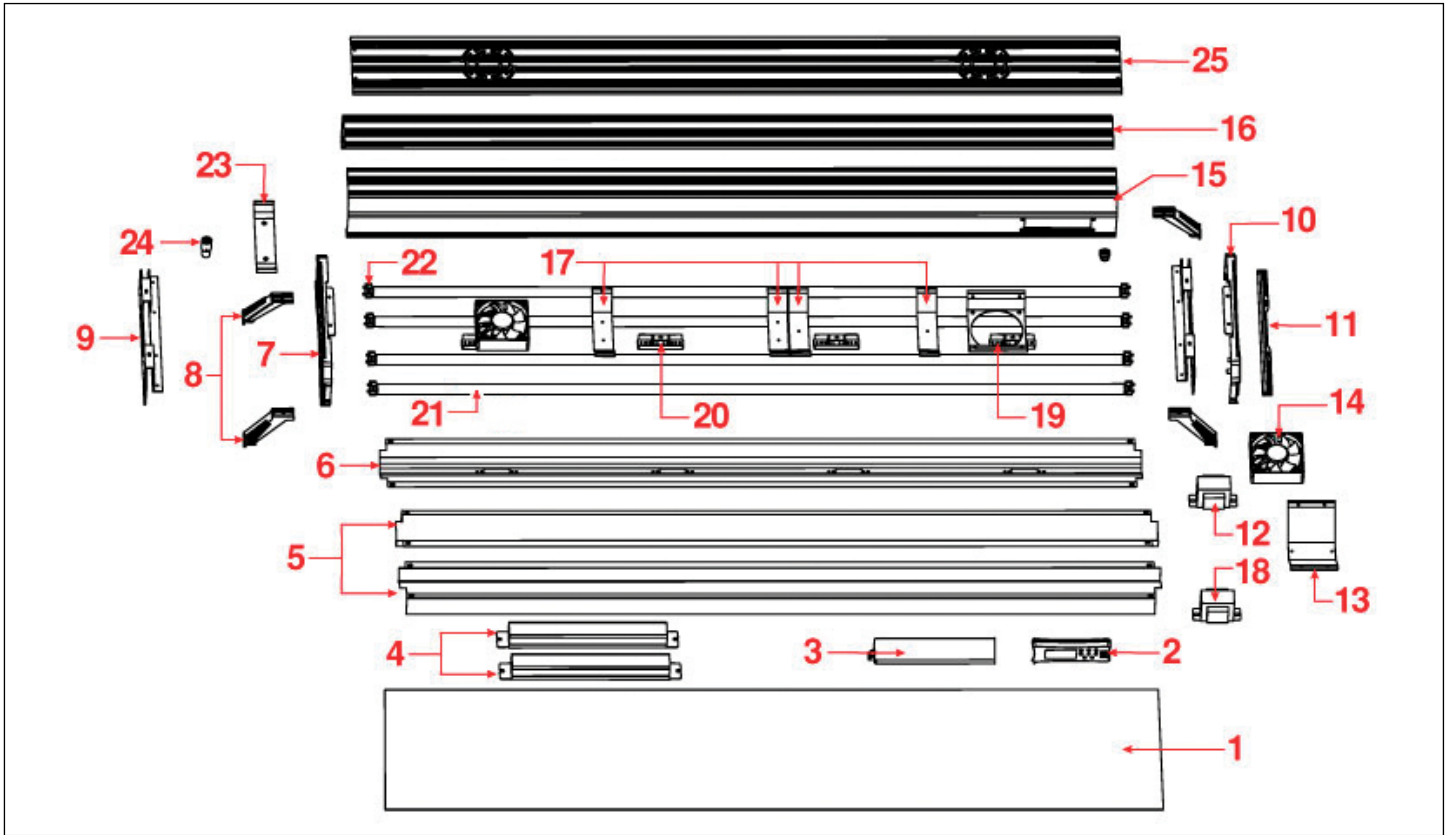


LAB TEST CRITERIA/DATA TABLE

- 3" X 3" GRID WITH SPACING OF 3" IN THE X,Y DIRECTION
- FIXTURES CENTERED OVER THE GRID AND TESTED THROUGH AIR
- PAR MEASURED AS PPFD (MICROMOLES/M2/SEC) USING APOGEE QUANTUM METER MQ-200

	12	9	6	3	-3	-6	-9
-12	23	27	28	29	28	26	23
-9	30	34	37	38	37	34	29
-6	38	43	46	48	46	42	37
-3	42	48	52	53	51	47	40
3	43	48	52	53	52	47	40
6	39	44	47	49	47	43	36
9	33	37	39	41	39	36	31
12	25	29	31	31	31	28	25

DIAGRAM DOES NOT REFLECT ACTUAL SIZE



**20" FOUR-LAMP T5 HO LIGHT FIXTURE**

DIAGRAM NUMBER	ITEM NUMBER	PART DESCRIPTION
1	9000389	Lens Cover Acrylic T5HO Fixtures
2	9000154x	Timer Panel
3	N/A	Relay Box (not serviceable)
4	470020	Ballast
5	9000390	Reflector Outer T5HO 4-Lamp (universal)
6	9000391	Reflector Inner T5HO 4-Lamp (universal)
7	470106	End Plate T5HO Fixture (left)
8	470065	Aquarium Frame Mounts T5HO 4-Lamp (4 PK)
9	9000277	End Plate T5HO 4-Lamp Fixture (universal) Metal
10	470107	End Plate T5HO Fixture (right)
11	N/A	Housing Acrylic End Cap (attached to Lens Cover)
12	9000152	Transformer 12V (Timer & Fan)

DIAGRAM NUMBER	ITEM NUMBER	PART DESCRIPTION
13	9000278	Bracket T5HO 4-Lamp Transformer Cover
14	N/A	Fan T5HO & CF Fixture
15	N/A	Housing T5HO 4-Lamp w/Timer Punch (front)
16	N/A	Housing T5HO 4-Lamp (back)
17	N/A	Bracket Support Ballast
18	9000150	Transformer 4.2V (LED)
19	9000279	Bracket Support T5HO 4-Lamp Fan
20	470103	LED Module T5HO & CF 1W (Blue)
21	N/A	Lamp T5HO
22	9000280	Socket T5HO 4-Lamp Fixture (twist lock) Note: non-twist lock sockets cannot be replaced
23	N/A	Bracket Support Suspension
24	9000269	Suspension Port Screws T5HO/CF (4 PK)
25	9000392	Housing T5HO 4 Lamp Vented Cover

**20" FOUR-LAMP T5 HO LIGHT FIXTURE**